

Workshop Camera Club

Welcome to New Members Information Sheet

Welcome to your new Club.

You now belong to a group of friends all with a passion for photography. We are currently the only club that meets weekly which, in turn, means that there is a great variety of activities for you to experience and enjoy.

On Arrival

On the table just inside the door there is a small green box of drawers with all our name tags in. We just put them back when we leave but if you forget just bring it next week. You will notice some badges are green. These identify the Committee members and they will help and guide you with any questions you may have. Also on the table is the "sign-in sheet" which we all must initial to acknowledge our attendance. This data is used to help the committee monitor the popularity of club activities and tailor the programmes accordingly

Meeting Format

The meetings follow a general format with announcements from the President and other members. The President then says a few words about the evening. Each month we hold an Exhibition of our images and we also try to have one training session, one speaker (guest or member) and one workshop or outing per month. On average meetings finish between 9.00 and 9.30 pm. There is always time after the meeting closes to chat and enjoy nibbles with free tea/coffee provided.

Exhibitions

Most photographers are keen to show their latest images and get some feedback on them and so we hold an exhibition on the first Wednesday of every month when all who wish can submit images for judging. In 2013 we adopted a system of judging called Gold, Silver and Bronze instead of the traditional first, second and third. The reason for the change is so that images may be judged on their own merit instead of in competition with all the others and this is also much less intimidating for new exhibitors. We always have an outside judge and they can award Gold, Silver, or Bronze to any image that warrants that particular grading. There is no upper or lower limit of these awards.

The Exhibition consists of a pre-specified subject and an open category. Both of these can be in print or projected form giving us each the opportunity of submitting four entries for assessment. All images are initially submitted anonymously then identified after judging. Should you find this daunting you can remain anonymous and that way your image will still be judged and you are able to benefit from the judges critique. No Club points are awarded to anonymous entries. Entry to our Exhibition Nights is certainly not compulsory but it is highly recommended that you participate as a valuable learning curve in your photographic journey.

The exhibitions are covered by a set of rules. One important rule is that the image must have been taken in the last 12 months. You can find the rules on our website. Please check them out before entering.

Outside Competitions

At present the Club takes part in two outside competitions per year, one with Northern Exposure Photographic Group (NEPG) held midyear and the second (Triang) with Westside Photographic Club and WA Camera Club held at the end of October. It is with these inter-club competitions that one of our responsibilities as members lies. Without images being submitted we have no competitions so it is expected that all images, prints or projected, that are awarded Gold Silver or Bronze on Exhibition Nights will be made available to support WCC, your Club.

Education

The Club attempts to provide education to all skill levels through its programme of training sessions, workshops and outings. On the general club night outings our Programme Director organises mentors and we meet at a venue where we split into groups practise our photography. It does not matter what camera you have – it does not turn into an equipment competition. We are there to help each other with a Guru to watch over us. It is always the greatest fun and the best way to get to know your fellow members.

Special Interest Groups (SIGS)

To accommodate all interests where possible, there are several interest groups, eg. Landscape, Portraits, Birds, Macro, Architecture to name just a few. They are being added to all the time and you are welcome to start one that suits you. The groups arrange shoots of their own outside club hours and afterwards upload their best images onto the relevant website Galleries for us all to enjoy. You need to log in to do this but that will be explained later.

Photographic Darkroom

The Club has a fully equipped monochrome darkroom. An active Darkroom Special Interest Group within the Club provides orientation and instruction in Darkroom practice. Film photography up to medium format size, and photo printing using traditional enlargers are available to members.

Library

At our meeting rooms the Club maintains a free library of all types of photographic books available for loan to all members. All that is required is to enter your details on the relevant record card to borrow any book. There is no fixed time for return but about two/three weeks is about the norm.

Club Loan Equipment

The Club owns some items of equipment which are available for loan to members. Please refer to the website and equipment officer for details.

Photographic Markets

Three times a year we join with NEPG and hold a photographic market at Leederville Town Hall. This market gives us the opportunity to buy and sell any unwanted gear and it is very well patronised. The Clubs also benefit from sharing the proceeds from the entry, table hire and cafe monies. We all do our best to support this by helping to set up, man the club table, the cafe and tidy up afterwards.

Finally

You are now a member of Workshop Camera Club. With membership comes responsibility.

For our club to function effectively there are many tasks, small and large, that need to be done. Each meeting begins by clearing the room and setting out chairs and equipment and ends by restoring the room to the state in which we found it. On Exhibition Nights helpers are also required to log in the entries, hang prints on display boards and run the raffle. These are the small things but very important in the smooth running of one of our busiest nights.

During the year there are many events such as inter club competitions, the Canning Arts Gala Day and Riverton Library displays as well as club and Special Interest Group outings and workshops. All of these events need active participation. You will be asked to offer your prints and projected images for use in some of these events and to offer your time to help run them.

As in all things, the more you put in the more you will get out of your new club.

We welcome you as one of us.

Website

WCC's web address is: <http://www.workshopcameraclub.org.au>. The website is a mine of information about the club so try to familiarise yourself with it right away. Part of the site is open to the general public and part is restricted to members.

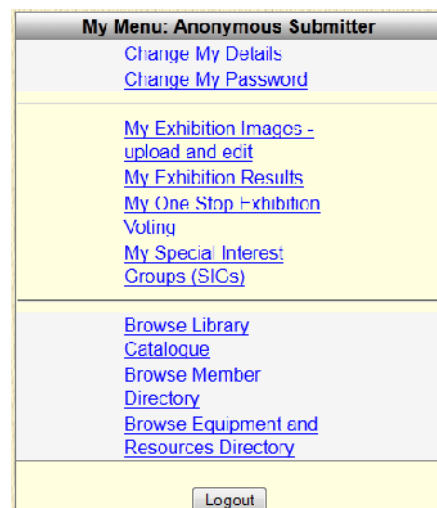
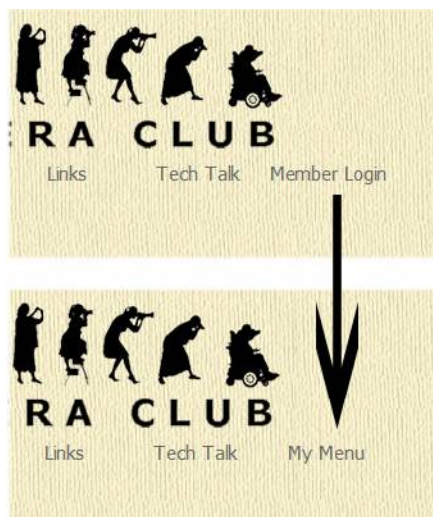


Begin by clicking on and exploring the menus that are visible to everyone: **Club Info, What's On, Galleries, Newsletter, Links and Techtalk**. Look at the Constitution and Exhibition Rules under *Club Info*. Under *What's On*, look at the Calendar to see what is happening at the club in the next few weeks, and Exhibitions to see the list of current exhibition subjects. If you are interested in the standard of our images look at some of the *Galleries* and see which images were awarded places.

We are extremely proud of our newsletter, Dark Rumours and previous editions can be found under the *Newsletter* menu. Spending some time browsing through these will give you an excellent snapshot of our club and some of the people who help to run it. Look at some of our members' web sites in the *Links* section and find out what is meant by Depth of Field and how to resize images under *Techtalk*.

By the time you have absorbed all of this information your logon details should have been emailed to you. You are now ready to explore the "Members Only" section.

- Click on the **Member Login** tab and enter the **User Name** and **Password** that have been sent to you.



- Click on Login. You are returned to the Home Page and the Member Login option has been replaced by **My Menu**. Clicking on **My Menu** reveals a whole new set of menu items .
- Click on **Change My Password**. Change your password to one known only to you, then click on **Update Password**. When you see the message” Password was updated successfully” click on **Cancel** to return to **My Menu**.
- Now click on **Change My Details**. Change anything that is incorrect. If you have your own website or a page on a photo-sharing site you can add the link here. It is also helpful to other club members if you can upload a current photo of yourself.

- Return to the Homepage and explore Galleries again. You now have access to galleries that are hidden from non-members.

If you are not sure about anything on the web site, try hovering your mouse pointer over the object in question and you will see a helpful hint.

For more information on how to use the web site for exhibitions and to re-size images, see the Appendix on page 6

Appendix

Uploading Exhibition Images

All images entered into a monthly exhibition have to be uploaded to the website before midnight on the Friday before the exhibition date. Before they are uploaded they have to be re-sized to fit in a box 1920 pixels wide and 1080 pixels high. Resizing images is discussed below.

Once you have resized your images and know where to find them on your computer, do the following:

- Log on to the WCC website. Click on **My Menu** then on **My Exhibition Images**. You will see the following page:



- Click on the **Browse** button opposite **Browse your images for File to Upload**. Locate your image file on your computer and click on **Open**. You are returned to the above page and your file name is shown in the **File to Upload** box.
- Enter the title of your image as you want it to appear when it is projected in the **Set the Image Title** box. If you leave this blank the title will be taken from the filename.
- Now you need to make some choices about this image. Under **File to Upload** are 3 options for you to tick or clear. Hover the mouse pointer over each for an explanation and then make your choice.
- Finally click on the Upload button that accurately describes your image. If you are entering the Open section of Projected Images, click on **Upload into Projected Open**. If you are entering a Printed image into the Subject category then click on **Upload into Print Subject**.
- Your image will appear in one of the boxes underneath the upload section. (See below)
- Under the image you can see the Choices you made. If you change your mind you can click on the option to change it. You can also change the image title or delete the image.



- You need to repeat all these steps for each image.

Resizing Images with Photoshop and Photoshop Elements

Refer to the web site under **Tech Talk / Image resizing for the new projector.**

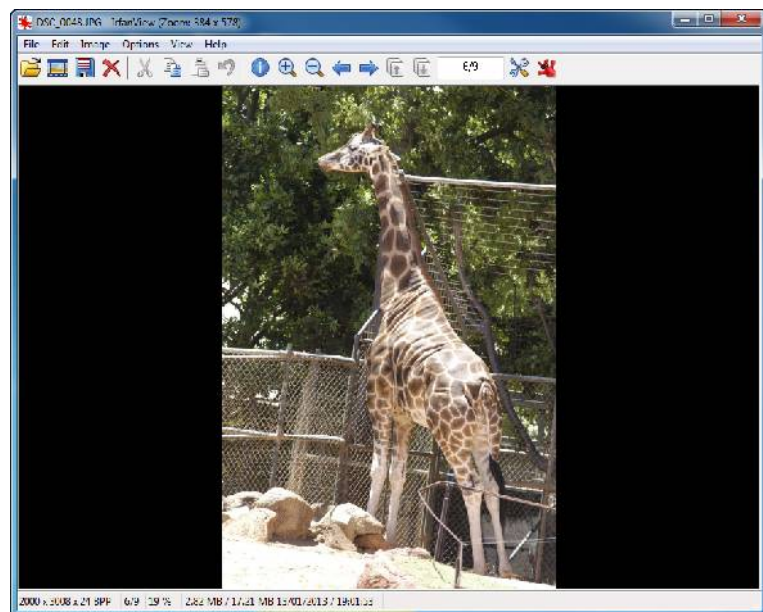
Resizing Images with IrfanView

IrfanView is a free and versatile image presentation programme that, among many other things, allows you to easily resize your images. If you haven't already got IrfanView, it is suggested that it is a highly worthwhile download. When you download it, make sure you also download the associated IrfanView plug-ins module. This is needed to open RAW format files.

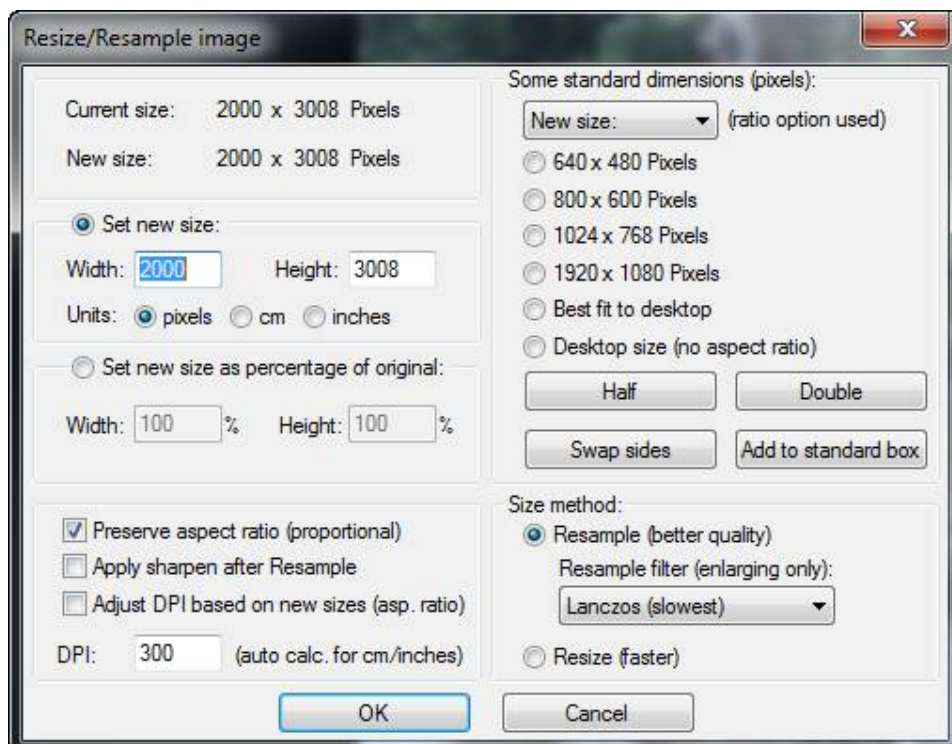
Run IrfanView and then choose **File/Open**. Use the drop down box to navigate to the location of your file. Select the file and then click on **Open**.

The file opens and the file dimension in pixels are shown at the bottom left corner of the window. This image is 2000 pixels wide and 3008 pixels high.

For the projector, your image **MUST** fit within a window of 1920 x 1080 pixels. This image is far too big to fit and must be resized.

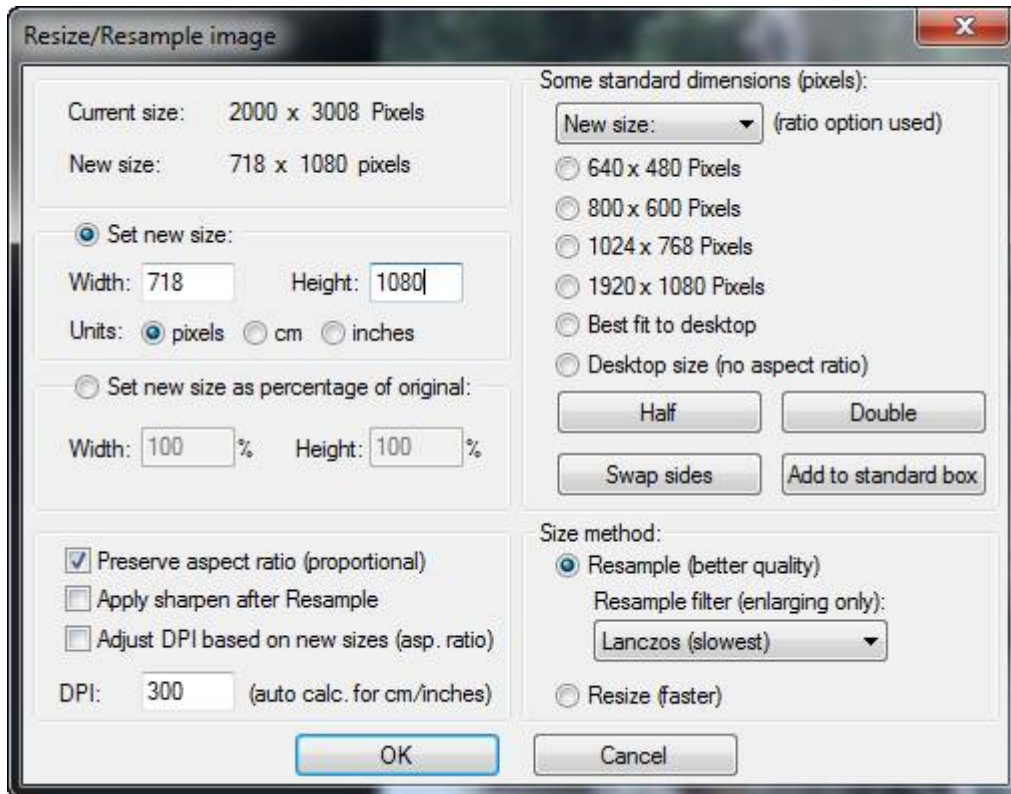


Choose **Image/Resize/Resample**. You see this dialog box.



First notice there is a Preserve aspect ratio check box. This MUST be checked otherwise you would destroy the aspect ratio - the shape of your image.

You have to set a new size. This image requires that we set the height to 1080 pixels - the maximum vertical size of the projector. Under **Set new size** fill in both the **Width** and the **Height** box to the size of the projector (1920 x 1080). Your dialog box should look similar to this:

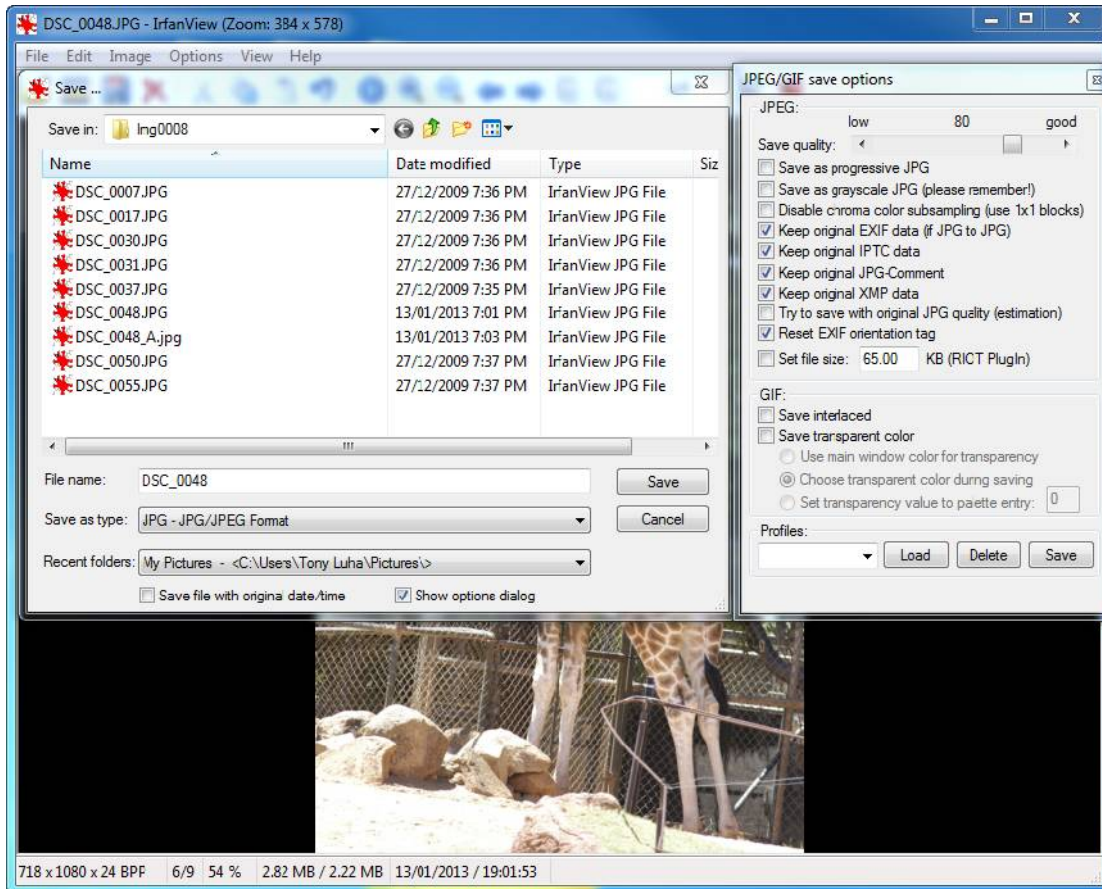


Notice that the **New size** is changed to 718 x 1080 pixels (this refers to the image of the giraffe). The new size therefore complies with the requirement that your image must fit within a 1920 x 1080 window.

Click on **OK**

The image is resized and the new size is reported at the bottom left corner.

Now you must save the new image. Choose **File**. You can choose to save the image anywhere you like including in the original folder. The following dialog box is what you see if you choose **Save (original folder)**.



WARNING. If you go ahead and click on **Save**, you may overwrite your original image. It is **STRONGLY RECOMMENDED** that you alter the file name, for example by appending something like: **_1920x1080** to the existing filename.

Note: You don't normally have to make changes to the **JPEG/GIF save options** dialog box. However, if the finished file size exceeds 1,000,000 bytes you will have to re-open the saved file and reduce the **Save quality** slider before saving it again.

Click on **Save**. You now have the original file and a downsized version ready to upload to the web site.

Use **My Computer** to navigate to the folder where you saved the image and check its file size. As long as it is less than 1,000,000 bytes all is well. Otherwise open the image and save it again with a reduced quality setting (see above).